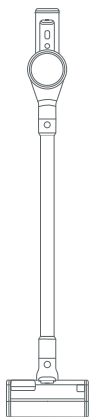




# SUPERPULL V100

HANDHELD WIRELESS SMART  
VACUUM CLEANER



READING INSTRUCTIONS

*Happy wife Happy life*

# Safety Instructions

## IMPORTANT SAFETY INSTRUCTIONS

When using an electrical appliance, basic precautions should always be followed, including the following:

**READ ALL INSTRUCTIONS BEFORE USING (THIS APPLIANCE)**, Failure to follow the warnings and instructions may result in electric shock, fire and/or serious injury.

**⚠ WARNING—TO REDUCE THE RISK OF FIRE, ELECTRIC SHOCK, OR INJURY:**

1. Do not use outdoors or on wet surfaces.
2. Do not allow to be used as a toy. Close attention is necessary when used by or near children, pets or plants.
3. Use only as described in this manual. Use only manufacturer's recommended attachments.
4. Do not use with damaged cord or plug. If appliance is not working as it should, has been dropped, damaged, left outdoors, or dropped into water, return it to a service center.
5. Do not pull or carry by cord, use cord as a handle, close a door on cord, or pull cord around sharp edges or corners. Do not run appliance over cord. Keep cord away from heated surfaces.
6. Do not unplug by pulling on cord. To unplug, grasp the plug, not the cord.
7. Do not handle charger, including charger plug, and charger terminals with wet hands.
8. Do not put any object into openings. Do not use with any opening blocked; keep free of dust, lint, hair, and anything that may reduce air flow.
9. Keep hair, loose clothing, fingers, and all parts of body away from openings and moving parts.
10. Use extra care when cleaning on stairs.
11. Do not use to pick up flammable or combustible liquids, such as gasoline, or use in areas where they may be present.
12. Do not pick up anything that is burning or smoking, such as cigarettes, matches, or hot ashes.
13. Do not use without dust bag.
14. Prevent unintentional starting. Ensure the switch is in the off-position before connecting to battery pack, picking up or carrying the appliance. Carrying the appliance with your finger on the switch or energizing appliance that have the switch on invites accidents.
15. Disconnect the battery pack from the appliance before making any adjustments, changing accessories, or storing appliance. Such preventive safety measures reduce the risk of starting the appliance accidentally.
16. Recharge only with the charger specified by the manufacturer. A charger that is suitable for one type of battery pack may create a risk of fire when used with another battery pack.
17. Use appliances only with specifically designated battery packs. Use of any other battery packs may create a risk of injury and fire.
18. When battery pack is not in use, keep it away from other metal objects, like paper clips, coins, keys, nails, screws or other small metal objects, that can make a connection from one terminal to another. Shorting the battery terminals together may cause burns or a fire.

19. Under abusive conditions, liquid may be ejected from the battery; avoid contact. If contact accidentally occurs, flush with water. If liquid contacts eyes, additionally seek medical help. Liquid ejected from the battery may cause irritation or burns.
20. Do not use a battery pack or appliance that is damaged or modified. Damaged or modified batteries may exhibit unpredictable behavior resulting in fire, explosion or risk of injury.
21. Do not expose a battery pack or appliance to fire or excessive temperature. Exposure to fire or temperature above 130°C may cause explosion.
22. Follow all charging instructions and do not charge the battery pack or appliance outside of the temperature range specified in the instructions. Charging improperly or at temperatures outside of the specified range may damage the battery and increase the risk of fire.
23. Have servicing performed by a qualified repair person using only identical replacement parts. This will ensure that the safety of the product is maintained.
24. Do not modify or attempt to repair the appliance or the battery pack except as indicated in the instructions for use and care.
25. Always turn off this appliance before connecting or disconnecting motorized nozzle.
26. Those people who are not capable of full action (e.g, the aged and children) must operate the appliance under the direction of the guardians who are capable of full action.
27. The vacuum cleaner floor brush, electric mite clearing brush, battery, metallic connecting tube and main body of the vacuum cleaner are all live parts. It is prohibited to use vacuum cleaner to pick up water or put it into water or other liquids directly. Washing the appliance in water is not allowed.
28. Carefully check the lithium battery pack if it is damaged and prevent it from fire, explosion or injury. Use of damaged battery pack is prohibited.
29. The vacuum cleaner is allowed to operate on dry surface only.
30. Unattended operation of the vacuum cleaner is prohibited.
31. Don't use wet hand to touch any live part of the vacuum cleaner.
32. Always keep the vacuum cleaner far away from heat source.
33. Never attempt to burn the vacuum cleaner. Explosion is possible in its combustion even it is badly damaged.
34. Don't use the vacuum cleaner to pick up those sharp or hard particles such as nails, glass, coins, pin and so on. Otherwise, the vacuum cleaner might be damaged.
35. Never let children play the vacuum cleaner as a toy.
36. Don't use the vacuum cleaner to pick up those decorated plasterboard dust, boiler ash, carbon dust and cinder. Don't use vacuum cleaner to pick up the smoking, burning or high temperature articles such as live charcoal, cigarette butts and matches.
37. Never place the air inlet suction end of the vacuum cleaner nearby eyes, mouth or ears and other human body surface.
38. Don't use the vacuum cleaner if the air inlet suction end is blocked. Thoroughly clean it before further use.
39. Only use our company recommended accessories and replacement.
40. Never attempt to run the vacuum cleaner before the installation of the dust bowl bottom cover, cyclone filter system components and HEPA filter components.
41. Always use special-purpose adaptor of the vacuum cleaner for charging. Use of improper adapter might cause battery trouble or explosion.
42. In case of trouble on the appliance, don't attempt to repair the vacuum cleaner by yourself. Please contact our after-sales service department.

43. Contact your supplier as early as possible for sales return if you find defects on the appliance before use.
44. Don't place the appliance under the sunshine directly for a long time.
45. Pay more attention for safety operation when you use the appliance to clean the stairs.
46. Only the designated battery pack is allowed to use in this vacuum cleaner. Any revised or modified battery pack is prohibited and otherwise the appliance might be damaged or an explosion might be occurred.
47. Don't block the air inlet suction end when the appliance is operated to protect it from damage.
48. Always take out the battery pack from the appliance before the appliance is discarded.
49. Always disconnect the power supply before you take the battery pack from the appliance.
50. Always disposal the battery in a safe way.
51. The appliance is designed for household use only.

### SAVE THESE INSTRUCTIONS

This appliance can be used by children aged from 8 years and above and persons with reduced physical, sensory or mental capabilities or lack of experience and knowledge if they have been given supervision or instruction concerning use of the appliance in a safe way and understand the hazards involved. Children shall not play with the appliance. Cleaning and user maintenance shall not be made by children without supervision. The appliance is only to be used with the power supply unit provided with the appliance this appliance contains batteries that are non-replaceable.

**WARNING:** For the purposes of recharging the battery, only use the detachable supply unit provided with this appliance.

- Rechargeable Lithium-ion Battery Pack.
- Push the battery pack into the battery so that the assembly is completed; first press battery pack release button, and then take out the battery pack.
- Rechargeable batteries are to be removed from the appliance before being charged;
- Different types of batteries or new and used batteries are not to be mixed;
- Batteries are to be inserted with the correct polarity;
- Exhausted batteries are to be removed from the appliance and safely disposed of;
- If the appliance is to be stored unused for a long period, the batteries should be removed; the supply terminals are not to be short-circuited.

Please make sure that the batteries are disposed of at an officially assigned location, it should not be mixed with general household waste.



**!** **Danger!** - Read the operating instructions to reduce the risk of injury



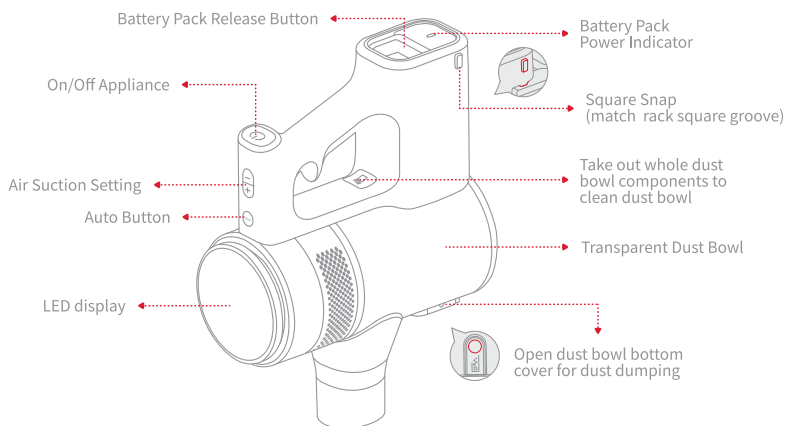
Store the batteries only in dry rooms with an ambient temperature of 50°F to 104°F (+10°C to +40°C). Place only fully charged batteries in storage (charged at least 40%).

**Use the appliance at a temperature between 32°F and 104°F (0°C-40°C).**

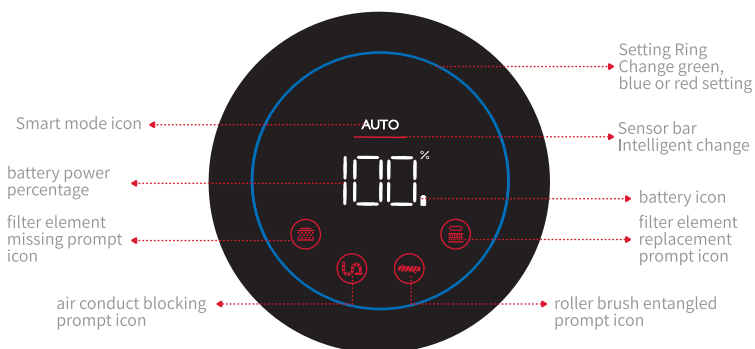
**Batteries should be charged in a location where the temperature is between 50°F and 104°F (10~40°C).**

# Product Introduction

## HOST



## LED Display



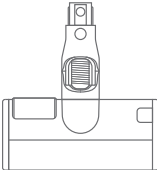
\*Press "AUTO" button and change it into smart mode.  
The setting ring will adjust it into a proper setting according to the sensor bar.

# Vacuum Cleaner Set Configuration

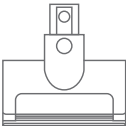
Host



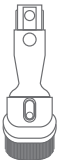
Soft roller floor brush



Electric mite clearing brush



Wide and flat mouth suction end with soft bristle



Flat mouth suction end for gap cleaning



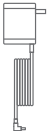
Metallic Connecting Tube



Multifunctional adapting hose



Adapter



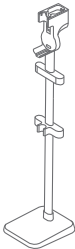
Cleaning brush



Battery pack \*2



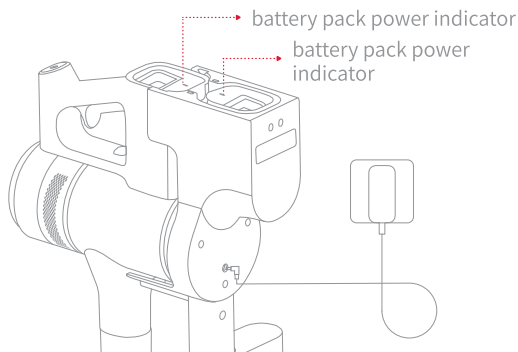
Stand Floor Charging Hanging Rack



## Product Charging

Full charging is required before first time use. It needs about 2.5 hours for full charging.

Charging by the stand floor charging hanging rack



Tips: The battery pack in the machine body will be charged preferentially by the system.



When the battery pack is not fully charged, the white indicator will flicker.



When the battery pack is fully charged, the white indicator will light on for 5 minutes and then it will go out for an energy-saving mode.

### ⚠ CAUTIONS!

1. When the appliance is shipped from the manufacturer, the battery pack is not fully charged. The user must charge it full before use.
2. Don't charge it in the ambient temperature below 0°C or higher than 35°C.
3. When the appliance is operated for a long time and the battery pack temperature is higher than 52°C, the normal self-protection of the battery pack will work. At that time, wait about one hour and then the appliance could be charged as normally.
4. If the power is insufficient during the operation of the appliance, the battery icon on display and the battery pack power indicator will flicker to remind the operator.
5. When the appliance battery life is shortened obviously, the suction power becomes insufficient and the charging time becomes longer, only professional staff is allowed to replace the battery. Never attempt to disassemble the battery pack by yourself as it is dangerous.
6. The discarded battery pack must be handled properly and safely. It should pack it well and put it into the hazardous waste recovery cabin or the special battery recovery service station.

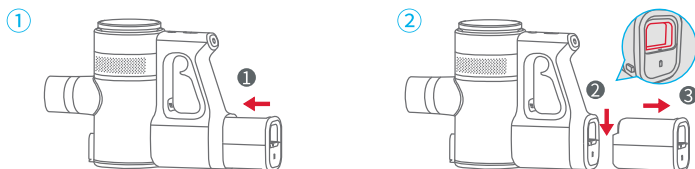
□ [symbol IEC 60417-6181(2013-03)] detachable supply unit

# Install Products

## Battery Pack Installation ▶

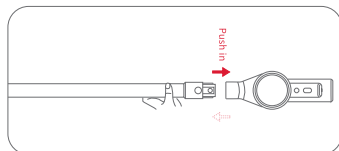
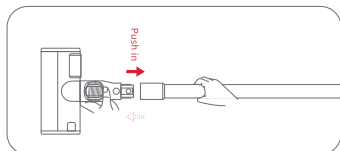
### ⚠ CAUTIONS!

- \* The machine must use the original battery pack and power adapter.
- \* Do not use the battery pack for anything other than this vacuum cleaner.

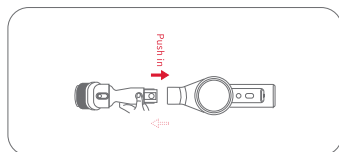
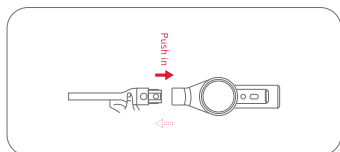


1. Push the battery pack into the battery compartment along the ① arrow till “click” is heard so that the assembly is completed.
2. After the appliance stops running, first press battery pack release button along ② arrow, and then take out the battery pack along ③ arrow.

## Brush Head Mounting ▶



1. Push one end of the ground brush connector into the air inlet of the metal connecting rod, and the snap is in place. Press release button in reverse direction to remove.
2. Push the metal connecting rod into the vacuum port of the main engine, and the snap is in place. Press release button in reverse direction to remove.



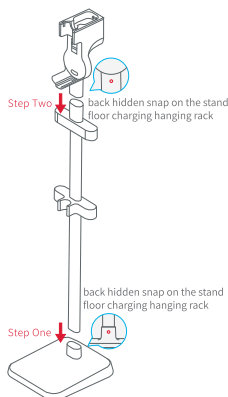
1. Push one end of the gap cleaning flat nozzle suction joint into the air inlet of the metal connecting rod, and the snap is in place. Press release button in reverse direction to remove.
2. Push the soft hair wide mouth two-use flat suction connector into the main machine vacuum mouth, snap in place. Press release button in reverse direction to remove.



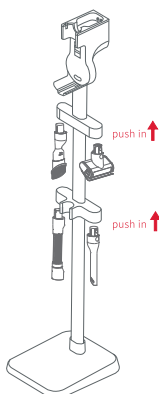
## Mounting Stand Floor Charging Hanging Rack ▶

### ⚠ CAUTIONS!

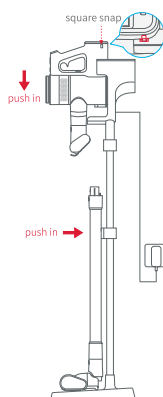
- \* As shown, mounting the charging hanging rack main body, metallic connecting tube and rack base together. Place the well assembled charging hanging rack on a flat floor in vertical.
- \* Only the original accessories are allowed to be used in installation to prevent the stand floor charging hanging rack from overturning. When cleaning, use dry cloth to wipe surface dust and stains.
- \* Don't attempt to repair the charging hanging rack by yourself otherwise the appliance cannot be charged properly.



1. Connect the metal connecting rod end to end, and hear the "click" sound, that is, the installation is successful.



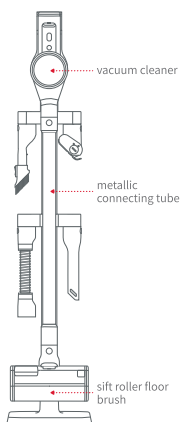
2. Insert the accessories in sequence into the fixing rack matching slots till "click" is heard. The assembly is completed.



3. Align the square snap of the vacuum cleaner with the matching slot on the stand floor charging hanging rack and then put it in. The assembly is completed.

### Gathering Procedures of Vacuum Cleaner

Connect the metallic connecting tube and the soft roller floor brush with the vacuum cleaner and then put it on the hanging rack directly. The gathering is completed.



TIPS: If you want to install the charging rack more firmly, you can choose to install it by fitting screw as shown.

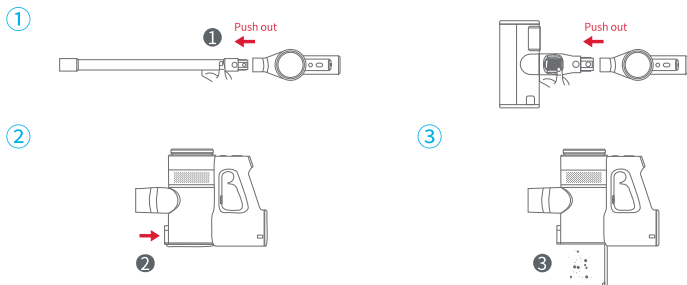


# Cleaning

## Dust Cup Cleaning Guide ▶

### ⚠ CAUTIONS!

- \* Please cut off the power supply before removing any machine parts!
- \* When the dust in the dust cup reaches the marked “Max” position, please clean the dust cup in time to ensure the best vacuum effect.

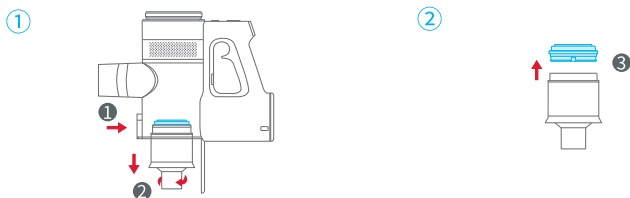


1. Turn off the power, press the release button on the metal connecting rod, **1** pull out the metal connecting rod and the ground brush and place it safely.
2. **2** Point the bottom of the hand-held vacuum cup at the dustbin, press the dust cup release button, **3** open the bottom cover of the dust cup, shake gently to empty the dust in the dust cup, close the bottom cover and lock it tightly.

## Air Inlet HEPA Filter Cleaning Guide ▶

### ⚠ CAUTIONS!

- \* All of the cyclone system components could be washed in water!
- \* Please make sure that the HEPA is installed when you assemble it!
- \* For assembly, each part must be dry in air.
- \* It is recommended that the air inlet HEPA filter be cleaned regularly.
- \* Don't scrub it or apply force on the HEPA filter in cleaning.



1. Along arrow **1** press dust bowl bottom cover release button to open the dust bowl bottom cover. **2** Hold the tail part of the cyclone system components and turn it anti-clockwise till its stopposition, then you may take out the cyclone system components.
2. Then take out the Air inlet HEPA Filter in the direction of arrow **3**. Use cleaning brush to clean the parts or rinse them in water and then dry them in air thoroughly.

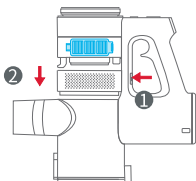
\*As shown, the blue marked parts need cleaning and separate them from other parts before cleaning.

## Air Outlet HEPA Filter Cleaning Guide ▶

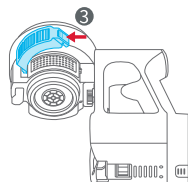
### ⚠ CAUTIONS!

- \* For assembly, carefully check if HEPA filter is located properly.
- \* For assembly, each part must be dry in air.
- \* It is recommended that the air outlet HEPA filter be cleaned once every six months and replaced once every one year.
- \* Don't scrub it or apply force on the HEPA filter in cleaning.

①



②



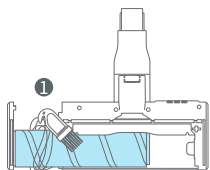
1. ① Press dust bowl release button to take out the dust bowl components. ② Then take out the HEPA filter support components.
2. ③ Slightly press air outlet HEPA filter release button to take out the HEPA filter. Use cleaning brush to clean the parts or rinse them in water and then dry them in air thoroughly.

## Soft Roller Floor Brush Cleaning Guide ▶

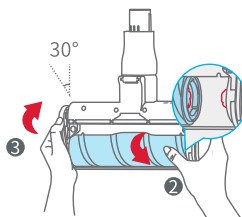
### ⚠ CAUTIONS!

- \* It is suggested to clean the roller brush after 4-5 application.
- \* The floor brush contains electric parts. Don't dip or rinse it in water.
- \* Before cleaning, the floor brush motor must be stopped and the power must be cut off.

①



②



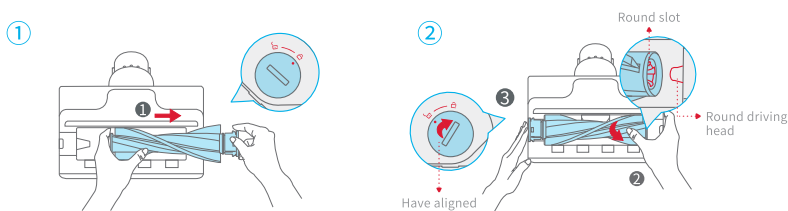
1. ① Press roller brush release button pull out roller brush components. Use cleaning brush to remove any hair of fibrous matter entangled on the roller brush (use cleaning brush head knife to cut off hair if any). If it is very dirty, rinse it in water and then place it vertically to dry it in air.
2. After they are dry in air, Put the brush head into the ground brush. ② Use one hand to adjust the roller position to align it with the tail propeller-shaped groove. Along arrow ③ to turn it anti-clockwise for proper position.

\*As shown, the blue marked parts need cleaning and separate them from other parts before cleaning.

## Electric Mite Clearing Brush Cleaning Guide ▶

### ⚠ CAUTIONS!

- \* It is suggested to clean the brush after 4-5 application.
- \* The mite clearing brush contains electric parts. Don't dip or rinse it in water.
- \* Before cleaning, the motor must be stopped and the power must be cut off.



1. Use coin to turn the roller brush side cover anti-clockwise till its stop position. Along arrow ① pull out the mite clearing brush. Use cleaning brush or water to clean it. Then place the brush vertically for dry in air thoroughly.
2. After it is dry in air, ② place the roller brush into the mite clearing brush. Use one hand to adjust the round slot on the roller brush to align it with the round driving head of the mite clearing brush. ③ Use another hand to align “•” and “⊞” on the roller brush side cover and then insert it. Turn it clockwise till “⊞”.

\*As shown, the blue marked parts need cleaning and separate them from other parts before cleaning.

## Common problem analysis

When the appliance is failed to operate properly, refer to the following table to handle any abnormal problem.

Common Failure	Causes	Solutions
Appliance does not work	Missing filter element	Install filter element
	Roller brush entangled	Remove entanglement
	No power or insufficient battery power	Fully charge appliance before use
	Blocking causing high temperature trigs automatic protection	After appliance is cool down, restart appliance
	Dust suction port or duct are blocked	Clear dust suction port or duct
Appliance suction power decrease	Too much dust in dust bowl and filter parts	Clear dust bowl and filter parts
	Appliance dust suction port or duct are blocked	Clear appliance dust suction port or duct
Motor running noise	Major suction port or aluminum pipe are blocked	Clear obstacles from major suction port and aluminum pipe
Be failed to charge appliance	Charging base plug does not insert well	Check if charging socket is connected well
	Bad contact between appliance and battery	Check if appliance and battery are set well
	Not use original adapter	Only use original adapter
Slow charging	Battery temperature is too high or too low	Wait battery temperature returns to normal, charge it
Air duct blocking icon flickering	Air duct is blocked	Immediately clear the obstacles
Roller brush entangled icon flickering	Roller brush is entangled	Immediately remove entanglement from the floor brush
Missing filter element icon flickering	Not installed air inlet HEPA filter	Check if air inlet HEPA filter is installed well
Filter element replacement icon flickering	Filter element comes to its end of service	Replace filter element. Press "AUTO" and "-" buttons together for more than 5 seconds and reset it
Setting ring flickering	Abnormal on motor	Remove obstacles inside duct or restart appliance
	Operation time is too long or temperature is too high	Stop appliance for cool down and then restart appliance

## Product Parameters

### SUPERPULL V100 Wireless Smart Vacuum Cleaner

Name	SUPERPULL	Rated Power	450W
Model	V100	Battery Capacity	2500mAh
Rated Voltage	25.9V $\equiv$	Adapter Model	SC362-320100V

### Soft Roller Floor Brush

Model	V100	Rated Power	40W
Rated Voltage	25.9V $\equiv$		

### Electric Mite Clearing Brush

Model	V100	Rated Power	20W
Rated Voltage	25.9V $\equiv$		

### Rechargeable Lithium-ion Battery Pack

Model	2103000800	Rated Capacity Energy	2.5Ah 64.75Wh
Nomlnal Voltage 71NR19/65 25R	25.9V $\equiv$	Charging Limited Voltage	32V $\equiv$

### Adapter

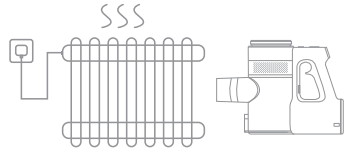
Model	SC362-320100V	Rated Output	32V $\equiv$ 1A
Rated Input	100-240V-50/60Hz 1A		

## Maintenance

Don't attempt to use vacuum cleaner to suck any liquid.



Don't charge or store the vacuum cleaner nearby hot source or wet place such as kitchen or bath room.



Don't attempt to use vacuum cleaner to pick up any burning object or hot object such as cigarette butts and carbon dust.



Don't attempt to use the vacuum cleaner to pick up any hard or sharp object such as glass and nails.



*Happy wife Happy life*

**Manual** + more informations on  
**Handbuch** + weitere Informationen zu  
**Návod** + viac informácií na  
**Návod** + více informací na  
**Kézikon** v + további információ  
**Instrukcje** + więcej informacji  
**Instrucțiuni** + Mai multe informații la



[www.nedes.eu](http://www.nedes.eu)